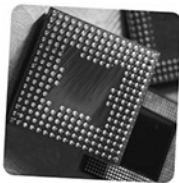


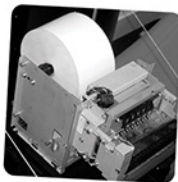
# Ascot

The **Ascot** goes beyond what a traditional countertop terminal will do - fitted with a high quality 22" touchscreen it is ideally suited for applications that require security and usability in a compact format. The **Ascot** is designed to accommodate a wide variety of EMV attended and unattended terminals, card readers, 1d & 2d scanners and thermal printers. The design allows for a full size kiosk print roll (6.5" diameter) to minimize out of paper conditions.

The **Ascot** is available in a wide range of colors and signage options so that it can be tailored to suit your branding. The flexible design also allows a choice of processors up to the Intel i7 processor.



22"  
Hi-resolution  
LCD



Internal  
6.5" print roll



Wide variety  
of EMV certified  
terminals

**Touchmate Inc.**  
7703 North Lamar Boulevard, Suite 100  
Austin, TX, 78752  
[www.touchmateUSA.com](http://www.touchmateUSA.com)

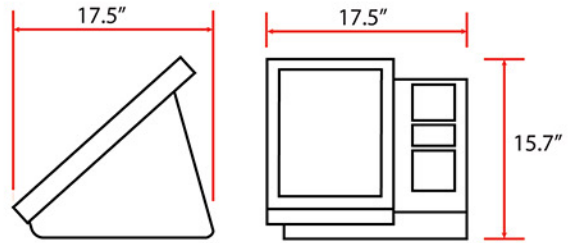
512 949 3330 Phone  
866 552 5426 fax

# Ascot specifications:

Display: 22-inch LCD LED Backlight 16:9 1920 X 1080 Full HD  
Projective capacitive UL60950 Compliant

Computer: Intel i5 Quad-core Processor  
4GB standard (up to 16GB) RAM  
Windows 7 Pro Embedded or Windows 10  
802.11 a/b/g/n Wireless Network standard  
8 USB Ports (4 USB 2.0, 4 USB 3.0)

Weight: 38lbs - 17kg



## Options:

- **Storage:**  
320GB Hard Disk Storage or 64/128GB Solid State Storage
- **Printers:**  
Star Micronics TUP500 Thermal Printer with Presenter  
Custom VKP80II 80mm printer
- **Credit Card Readers:**  
Swipe-style magnetic stripe reader (either non-encoded or encrypted type),  
2 or 3-track mode Insert-style magnetic stripe reader is also available
- **Bar Code Reader:**  
Datalogic Imaging 1D/2D Bar Code Reader, capable of reading codes from cell phone screens
- **EMV certified terminals:**  
As required



### United States

**Touchmate inc.**  
7703 North Lamar Boulevard, Suite 100 Austin, TX, 78752  
512 949 3330 Phone 866 552 5426 fax  
Web: [www.touchmateUSA.com](http://www.touchmateUSA.com)  
[info@touchmateUSA.com](mailto:info@touchmateUSA.com)

### Australia - New Zealand

**Touchmate Solutions**  
4/8 Bult drive, Brendale, Qld, 4500,  
07 3889 6031 Phone 07 3889 6028 fax  
Web: [www.touchmate.com.au](http://www.touchmate.com.au)  
[sales@touchmate.com.au](mailto:sales@touchmate.com.au)